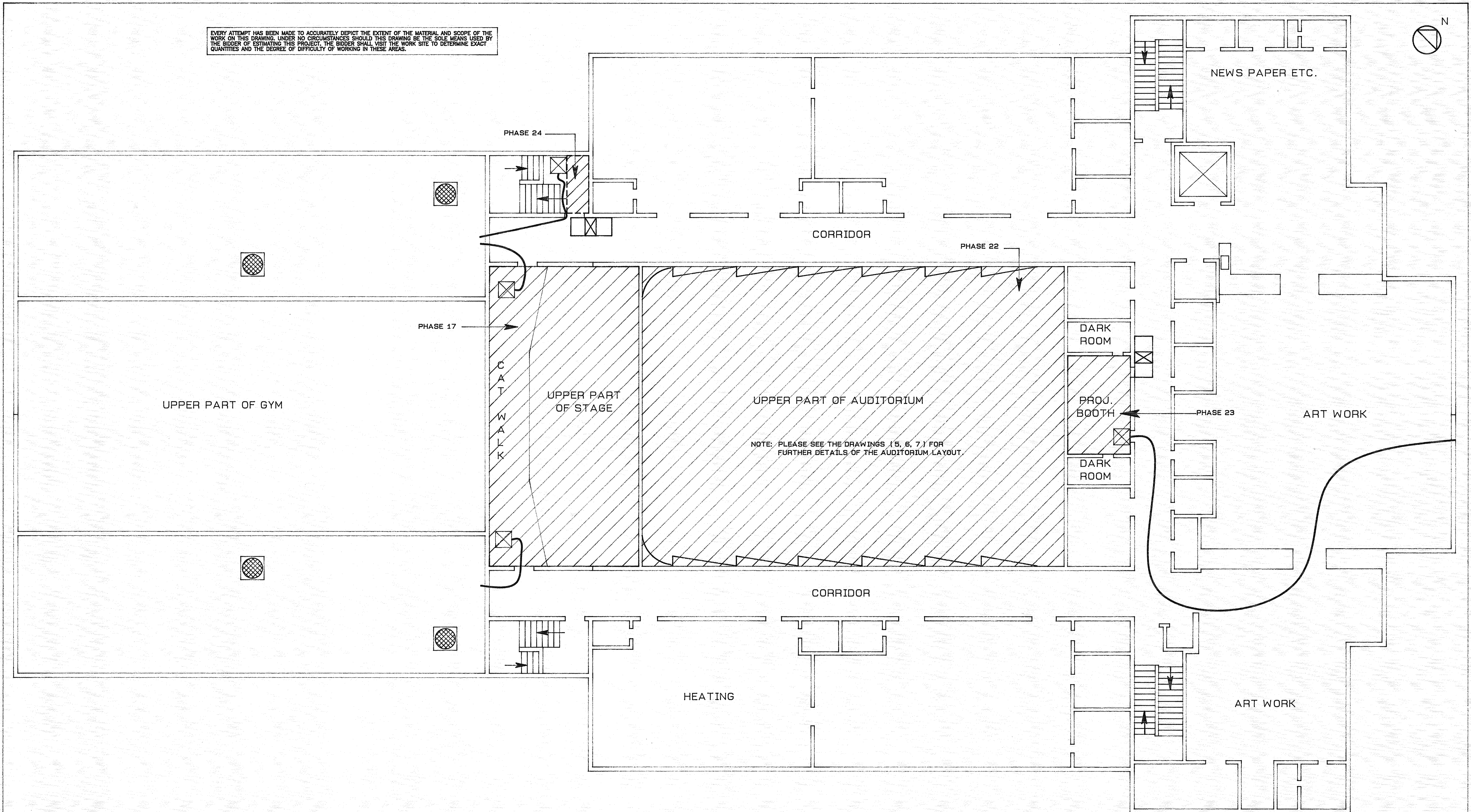
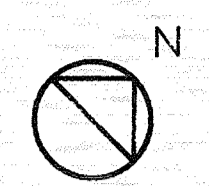


EVERY ATTEMPT HAS BEEN MADE TO ACCURATELY DEPICT THE EXTENT OF THE MATERIAL AND SCOPE OF THE WORK ON THIS DRAWING. UNDER NO CIRCUMSTANCES SHOULD THIS DRAWING BE THE SOLE MEANS USED BY THE BIDDER OF ESTIMATING THIS PROJECT. THE BIDDER SHALL VISIT THE WORK SITE TO DETERMINE EXACT QUANTITIES AND THE DEGREE OF DIFFICULTY OF WORKING IN THESE AREAS.



LEGEND:

- = TRANSITE PANELING
- = ASBESTOS REMOVAL CONTAINMENT
- = HEPA-EQUIPPED AIR FILTRATION AND PRESSURE LOWERING DEVICE
- = DECONTAMINATION UNIT

NOTE: ALL HEPA EXHAUSTS SHALL BE RIGGED TO THE NEAREST EXTERIOR OPENING. PLEASE NOTE THAT LOCATIONS ARE SUGGESTED AND MAY BE ALTERED UPON APPROVAL BY THE DESIGN CONSULTANT.

drawing title Second Floor Plan		STATE OF CONNECTICUT DEPARTMENT OF PUBLIC WORKS	
REVISIONS			
mark	date	description	
		DRAWING PREPARED BY ENVIROMED SERVICES INCORPORATED NEW HAVEN CONNECTICUT	date 1-12-93 scale 1/8"=1'
		project: ASBESTOS REMOVAL PLYMOUTH HALL FAIRFIELD HILLS HOSPITAL	drwn. by M.S.S. appvd. by F.T.R. dwg. no. 03
CAD no. BI-A-317 (ASB)	DWG-3	project no. BI-A-317 (ASB)	