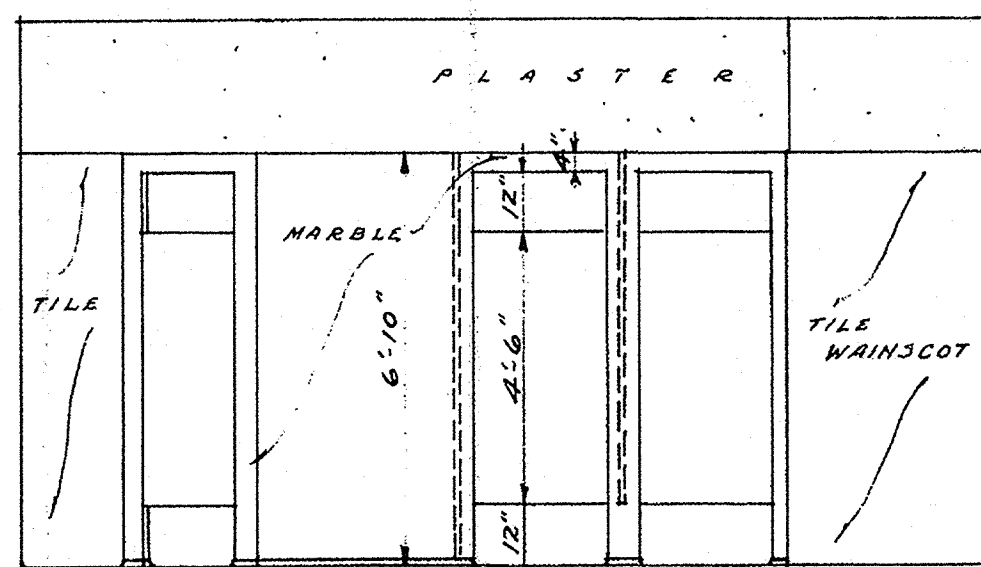
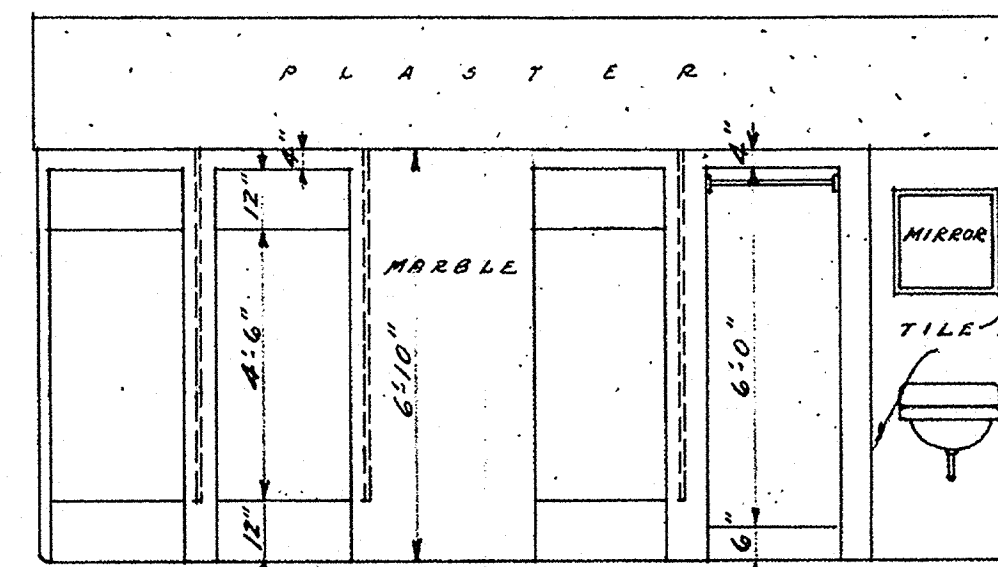


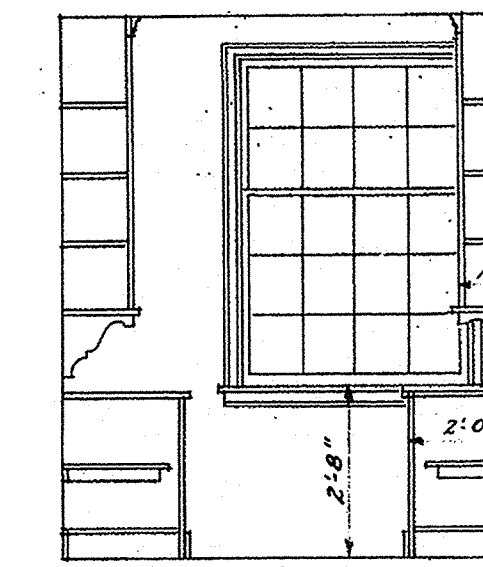
FLOOR PLAN



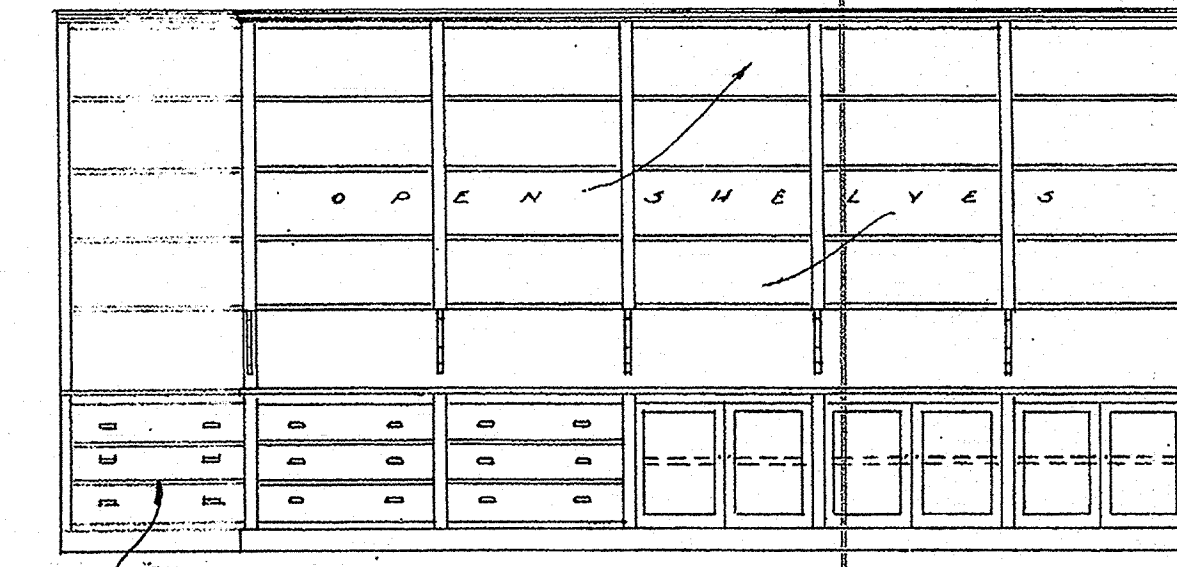
ELEVATION of WOMENS' ROOM



ELEVATION of MENS' ROOM

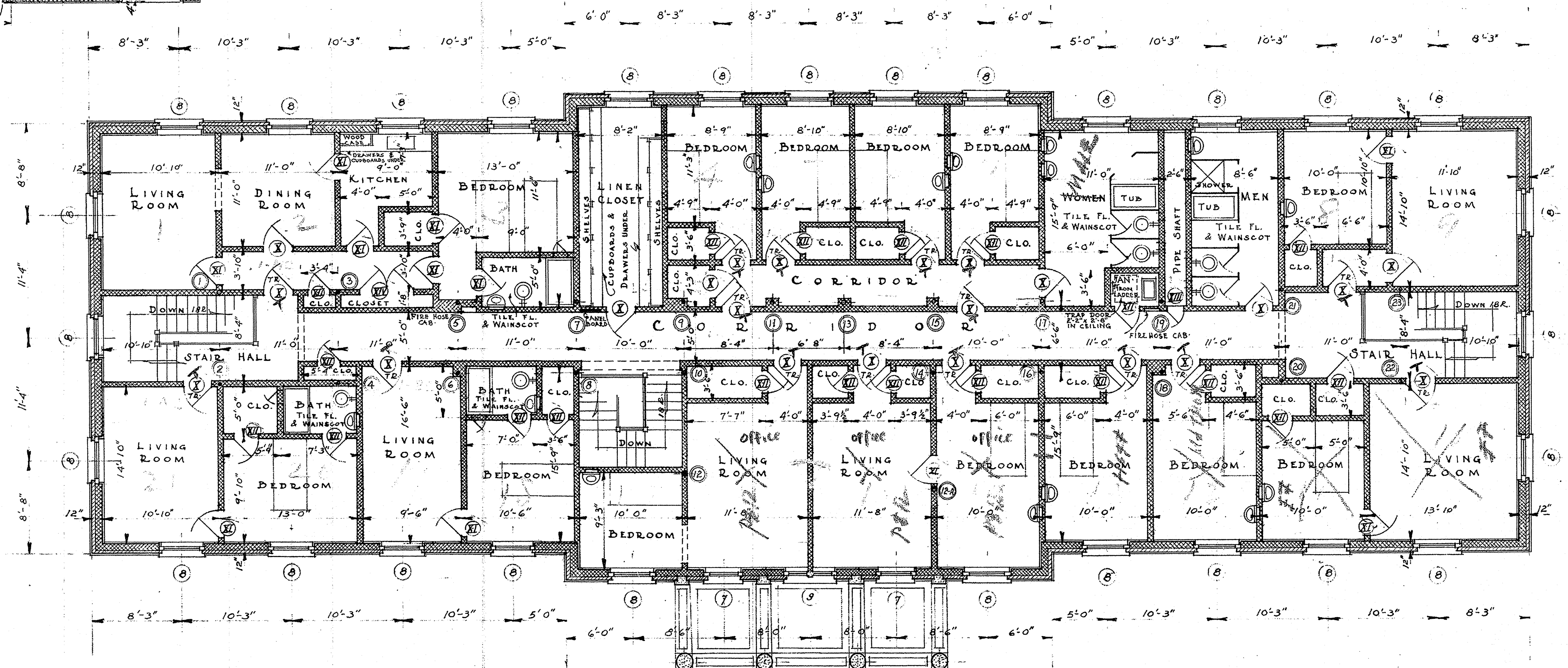


END & SECTION



WALL ELEVATIONS  
THIS SPACE TO BE FILLED WITH DRAWER UNIT ON OTHER WALL  
DETAILS OF LINEN ROOM  
SCALE 1/4" = 1'-0"

TOILET DETAILS  
SCALE 1/4" = 1'-0"



SECOND FLOOR PLAN

SCALE 1/8" = 1'-0"

NOTE: FLOORS IN ALL ROOMS, CORRIDORS, HALLS, CLOSETS, ETC. UNLESS OTHERWISE NOTED TO HAVE LINOLEUM.

TR. INDICATES TRANSOMS OVER DOORS. ALL TRANSOMS 1'-3" HIGH UNLESS OTHERWISE SHOWN.

CEMENT BASE THROUGH SECOND FLOOR EXCEPT AS OTHERWISE NOTED.

ACOUSTI-CELDTEX ON CEILINGS OF CORRIDORS & STAIR HALLS.

DOORS

KEY	DIMENSIONS WIDE HIGH THICK	REMARKS
X	2'-8" 6'-8" 1 1/2"	
II	2'-6" 6'-8" 1 1/2"	
XII	2'-2" 6'-8" 1 1/2"	
XIII	1'-8" 6'-8" 1 1/2"	
XIV	5'-0" 6'-8" 1 1/2"	

WINDOWS

KEY	MASONRY OPENING WIDE HIGH	GLASS	REMARKS
7	3'-2 1/2" 6'-0"	10x12	Wood
8	4'-0 3/4" 6'-0"	10x12	"
9	4'-8 1/2" 6'-0"	10x12	Wood Mullion

BLDG. 1 ADMINISTRATION

THE FAIRFIELD STATE HOSPITAL  
NEWTOWN, CONN.

DRAWN BY H.D.F.  
TRACED BY C.W.B.  
CHECKED BY  
REVISED

WALTER P. CRABTREE  
ARCHITECT  
410 ASYLUM ST.  
HARTFORD, CONN.

DATE MAY 1930  
SHEET

3

1-3