

END ELEVATION

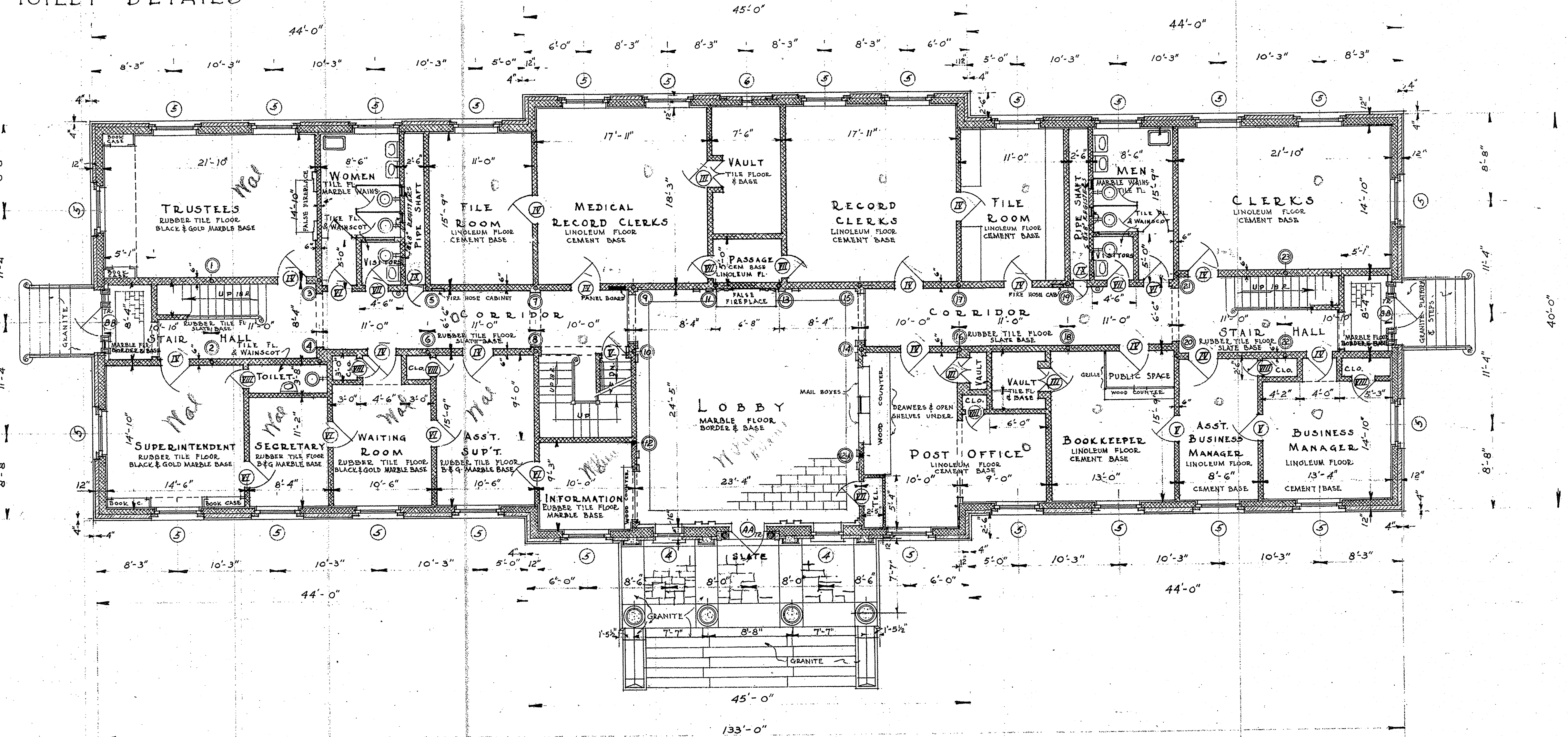
ELEVATION OF STALLS

SECTION THRU STALLS

TOILET DETAILS

SCALE 1/4" = 1'-0"

FLOOR PLAN



FIRST FLOOR PLAN
SCALE 1/8" = 1'-0"

NOTE: TR INDICATES TRANSOM OVER DOOR.
ALL TRANSOMS 1'-3" HIGH UNLESS OTHERWISE SHOWN.
ACOUSTI-CELOTEX ON ENTIRE CEILINGS OF FIRST FLOOR, EXCEPT TOILETS, FILING RM, VAULTS, & CLOSETS.

DOORS

KEY	DIMENSIONS WIDE HIGH THICK	REMARKS
AA	3'-4" 7'-0" 2 1/4"	SEE DETAIL
BB	3'-2" 7'-0" 2 1/4"	" "
III	2'-8" 6'-8" —	VAULT
IV	3'-0" 7'-0" 1 3/8"	
V	2'-8" 7'-0" 1 3/8"	
VI	2'-6" 7'-0" 1 3/8"	
VII	2'-4" 7'-0" 1 3/8"	
VIII	2'-2" 7'-0" 1 3/8"	
IX	1'-8" 7'-0" 1 3/8"	

WINDOWS

KEY	MASONRY OPENING WIDE HIGH	GLASS	REMARKS
4	3'-2 1/2" 6'-11"	10x12	WOOD
5	4'-0 3/4" 6'-11"	10x12	"
6	0'-11 1/2" 3'-0 3/4"		STEEL C.S.M.

BLDG. 1 ADMINISTRATION

THE FAIRFIELD STATE HOSPITAL
NEWTOWN, CONN.

DRAWN BY H.D.F. WALTER P. CRABTREE ARCHITECT
TRACED BY C.W.B. 410 ASYLUM ST. HARTFORD, CONN.
CHECKED BY
REVISED

CATE MAY 1910
SHEET NO. 1-2

2