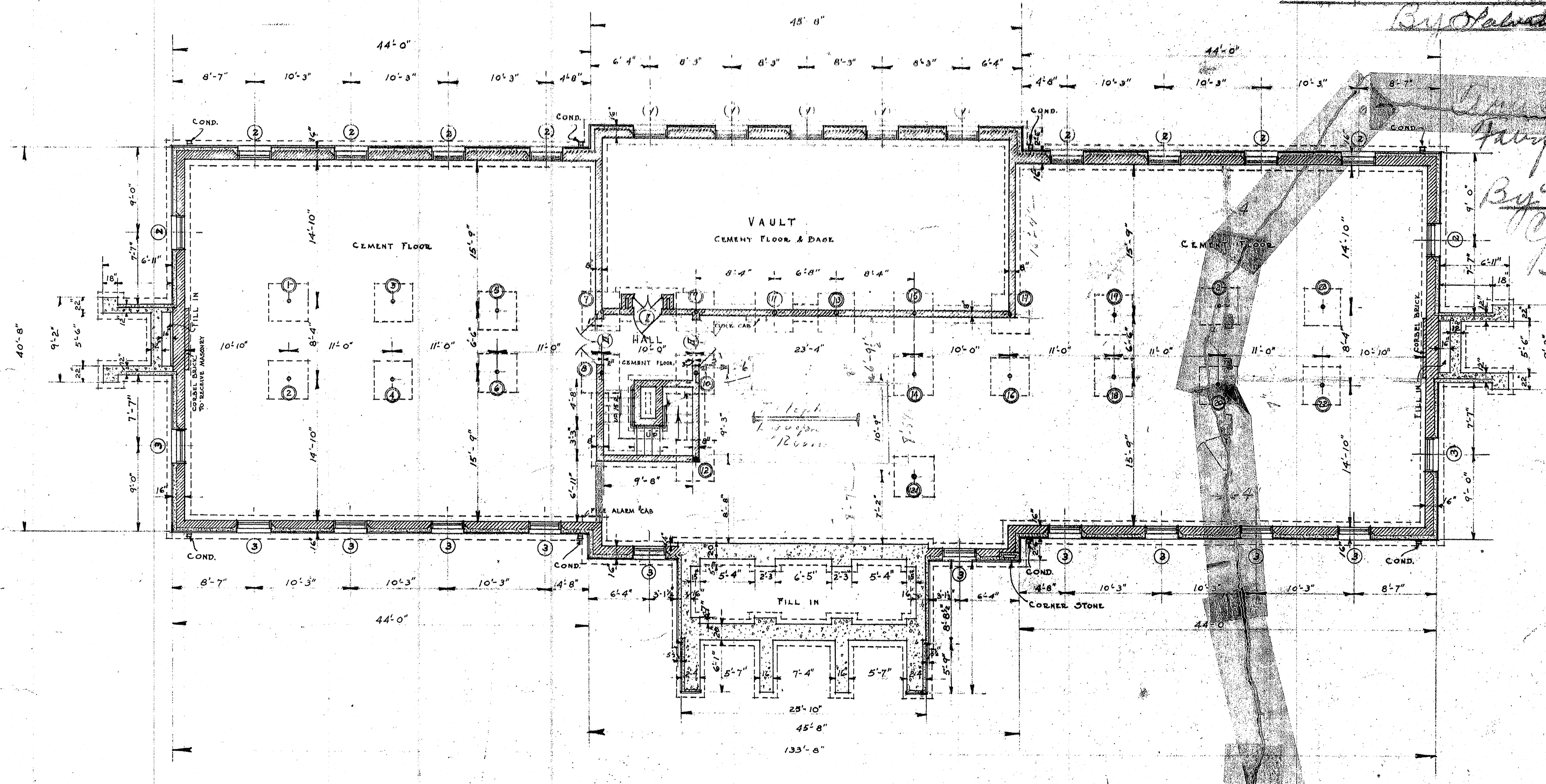


the drawing is to be in accordance with the following: Administration Bldg. #1-15, Dining Hall & Kitchen #16-25, Nurses' Home #26-40, Operating Rooms #41-45, X-ray #46-51, X-ray #52-59, X-ray #60-62, Storage #63-65, X-ray #66-68, X-ray #69-71, X-ray #72-74, X-ray #75-77, X-ray #78-80, X-ray #81-83, X-ray #84-86, X-ray #87-97, and Detail, Terrace & Plaza #98-100.

C. Albadena & Partners  
 By *Olavette Albadena*  
 (Contractor)  
 Fairfield State Hospital  
 By *Harold Senior*  
 Chairman of the Building Committee



DOORS

KEY	DIMENSIONS		REMARKS
	WIDE	HIGH	
I	2'-8"	6'-8"	VAULT
II	5'-0"	7'-0"	1 1/2"

BASEMENT PLAN  
 SCALE 1/8" = 1'-0"

WINDOWS

KEY	MASONRY OPENING		GLASS	REMARKS
	WIDE	HIGH		
1	2'-9 1/2"	1'-3"	10x12	STEEL
2	2'-11 1/2"	1'-10 1/2"	9x10	WOOD
3	3'-0 1/2"	2'-4"	12x16	"

Newtown Hall

0001

BLDG. 1 ADMINISTRATION

THE FAIRFIELD STATE HOSPITAL  
 NEWTOWN, CONN.

DRAWN BY H.D.F.	WALTER P. CRABTREE	DATE MAY 1930
TRACED BY C.W.B.	ARCHITECT	SHEET NO.
CHECKED BY	410 ASYLUM ST.	1-1
REVISED	HARTFORD, CONN.	